



Annual Alamo Service Connection Spring Event

May 18, 2009

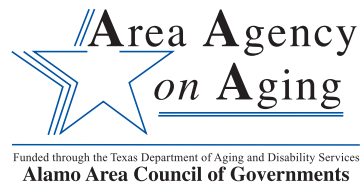


The Alamo Service Connection is the Aging and Disability Resource Center for Bexar County.





Partners





*Just
Ask*

ASC Steering Committee

- Lonna Ayres, Texas Interpreters
- Colleen Phillips, Adult Protective Services
- Vince Boyd, SA Lighthouse for the Blind
- Linda Ponce, Center for Health Care Services
- Dr. Paul Furukawa, CAMP
- Eva Trevino-Aranda, WellMed Medical Management
- George “Lynn” Britton, Jr., Joint Commission on Elderly Affairs
- Tom McGuire, Kronkosky Foundation
- Mary Ann Stumberg, Joint Commission on Elderly Affairs
- Anthia Murray, The University of Texas Health Science Center
- Melissa Rasco, Calab Inc.
- David Salinas, SER Jobs for Progress Inc., Workforce Solutions-Alamo
- Steve Saldana, Catholic Charities
- Ernesto Sanchez, Advocacy Inc.
- Sterling Neuman, Bexar Senior Advisory Committee
- George Walton, Bexar Senior Advisory Committee
- Suzanne Huber, Morningside Ministries
- Jennifer Velasquez, Workforce Solutions-Alamo



Mission

**Easy, friendly, helpful
access to services for older
adults, people with
disabilities and their
families in Bexar County.**



Vision

An informed community that promotes personal choice and is connected to long-term services and supports.



Goals

- Minimize service fragmentation
- Reduce duplicative paperwork and procedures
- Enhance individual choices
- Support informed decision-making



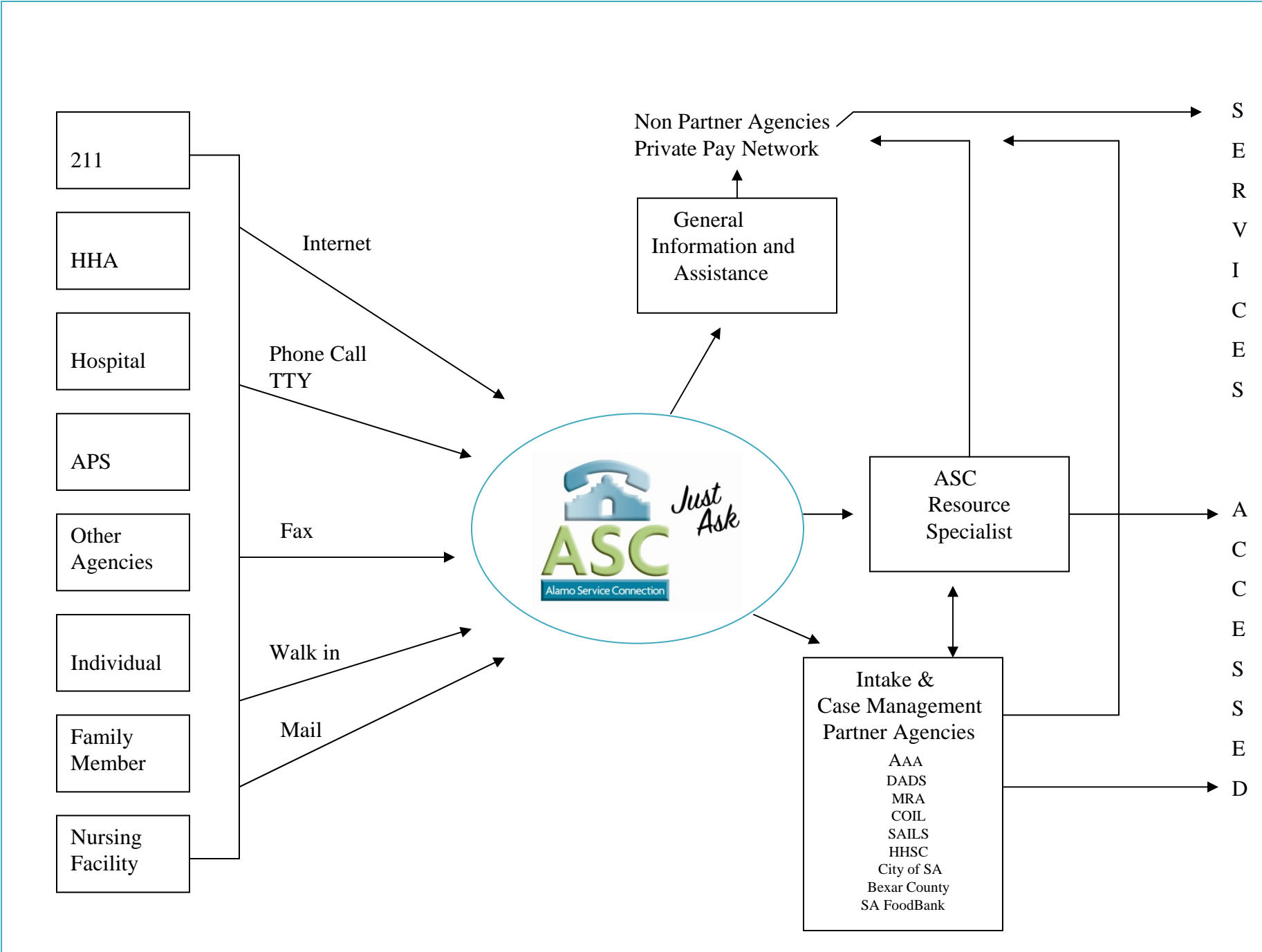
Objectives

- Establish a single point to obtain information, access services
 - 1 website - www.alamoserviceconnection.org
 - 1 telephone number - (210) 477-3275
- Community Partnership/Network
- One-on-one assistance in locating long-term services and supports. No need to miss work to find services for love ones.



ASC Services = Access

- ASC Call Center – Personalized easy, friendly, helpful assistance.
- Benefits Counseling – Public Benefits.
- System Navigation and Service Coordination.
- Informative Website – www.alamoserviceconnection.org
- eNewsletter – Stay Informed.
- The Network – Aging and Disability Providers.



TEXT ONLY

Visit Our Other Health Sites



SERVICE DIRECTORY

LIBRARY

ASSISTIVE DEVICES

LINKS

LEGISLATE

MY FOLDER

ALAMO SERVICE CONNECTION network of care

Sponsor | Sponsor | Sponsor | Sponsor | Sponsor

- Email to a Friend
- Live Demo

- For Providers
- Abuse Prevention
- Large Print
- Fall Prevention
- Message Boards
- Rx Assistance
- Calendar
- Add an Event
- Announcements
- Medicare
- About Our Partners
- About Our Sponsors



Welcome to Bexar County's Network of Care for Seniors & People with Disabilities, provided by the Alamo Service Connection.

This comprehensive, Internet-based resource is for the elderly and people with disabilities, as well as their caregivers and service providers.

The mission of the Alamo Service Connection is to provide easy, friendly, helpful access to services for older adults, people with disabilities and their families in Bexar County.

[Alamo Service Connection Disclaimer Notice](#)



Award Winner
For Innovation and Quality

Nationwide News

[Swine Flu/H1N1 News](#)

May 05, 2009

[States Consider 'Silver Alerts'](#)

May 05, 2009

[NSAIDs May Help Delay Alzheimer's](#)

May 05, 2009

[>> Elderly News Archive](#)

[Swine Flu/H1N1 News](#)

May 05, 2009

[Gene Defect Can Lead to Stroke](#)

May 05, 2009

[Women Have More Disability](#)

May 05, 2009

[>> Disability News Archive](#)



ASC Call Volume

22,543 Calls

Jan 2008 – April 2009



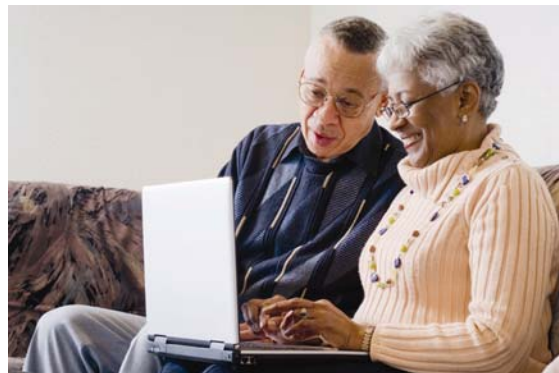


Website Sessions

95,293 Sessions

March 2008 – April 2009

Sessions include 7 minutes or longer





Number of People Reached in 2008 at Fairs & Presentations

2,174,851



From: The Alamo Service Connection/Bexar Area Agency on Aging [sueellenlewis@msn.com]

Sent: Tue 4/28/2009 3:11 PM

To: Martha Ramirez

Cc:

Subject: News Blast 26--Kickoff of Older Americans Month Observance; Crime Victims' Rights Week



Email News BLAST

The Alamo Service Connection

www.alamoserviceconnection.org (210) 477-3275

Aging and Disability Resource Center for Bexar County

Dear Martha,

Enjoy the new look of the ASC Email News BLAST, reflecting our ongoing efforts to make this electronic publication more accessible and easier to read.

May is Older Americans Month

Celebration of Seniors

Alamo Texercise Walk, Light Lunch and Ice Cream Social

Lion's Field Adult and Senior Center

2809 Broadway (Broadway & Mulberry), San Antonio

Friday, May 1, 2009 - 10 a.m. - 1 p.m.

Bexar County Seniors are cordially invited to a very special

From: The Alamo Service Connection/Bexar Area Agency on Aging [sueellenlewis@msn.com]
To: Martha Ramirez
Cc:
Subject: Monthly eNewsletter: The Alamo Service Connection

Sent: Tue 5/5/2009 2:43 PM



Welcome to the ASC eNewsletter

Vol 01, No. 03

- ASC Spring Event May 18
- May is Older Americans Month
- On-Site Benefits Counseling
- News Tidbits
- CAMP Camp
- Training, Meetings and Conferences
- Spotlight on the ASC
- Influenza Information Sources
- Contact Information

Dear Martha,

Alamo Service Connection.org
(210) 477-3275
Aging and Disability Resource Center
For Bexar County

In this eNewsletter, we share our information and resources with seniors, people with disabilities, and their caregivers, as well as our partners, providers and professionals. We have a section explaining new and existing features available on the Alamo Service Connection, as well as pertinent events, educational updates, informative articles, and useful links.

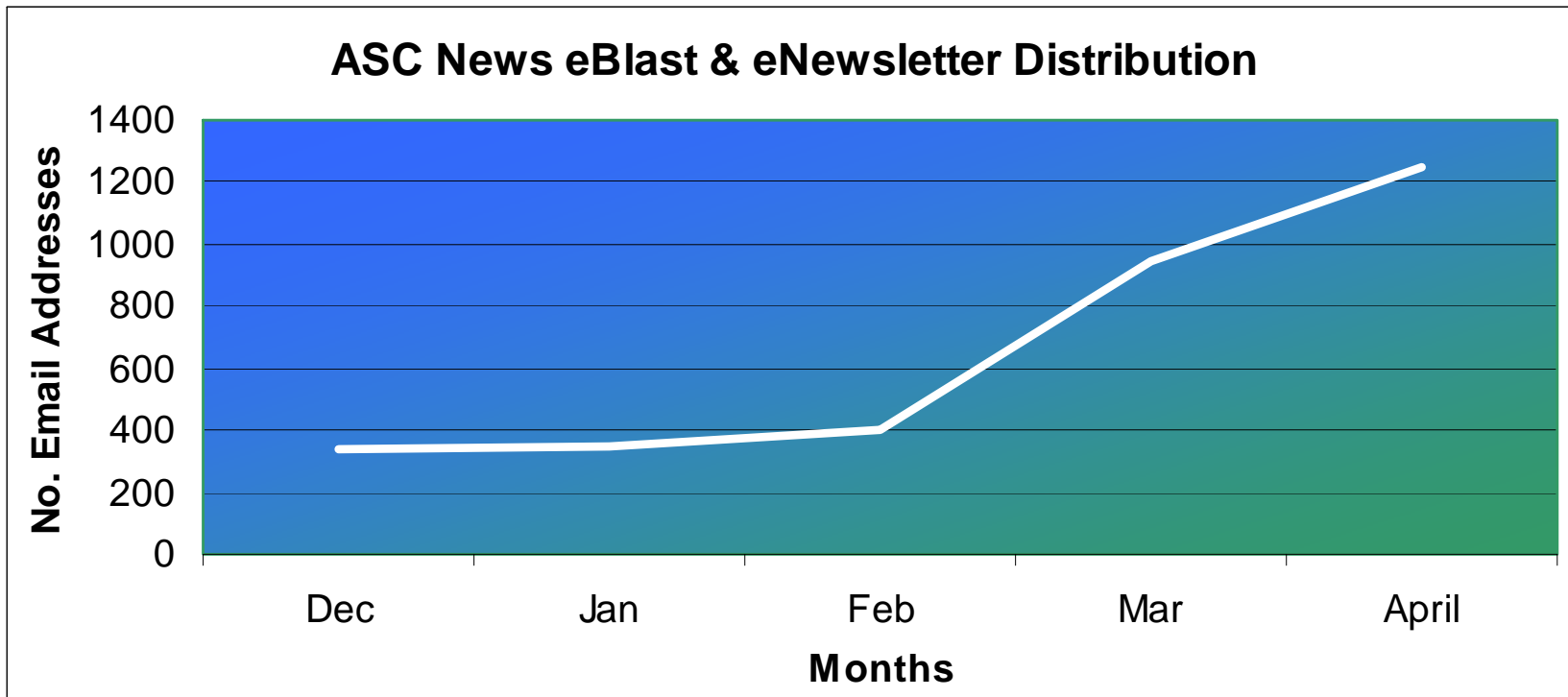
ASC Spring Event on May 18

The Alamo Service Connection (ASC), the Aging and Disability Resource Center for Bexar County, has scheduled the First Annual Spring Event. It is Monday, May 18, from 5:30 - 7 p.m. in the Rosenberg Sky Room, University of the Incarnate Word, 847 E. Hildebrand Avenue, San Antonio.



Just Ask

ASC News BLAST/ and eNewsletter Distribution



February to March: 100% Growth Rate

Goal: 10,000 recipients by May 2010



*Just
Ask*

Why Become An ASC Sponsor?

- Value added for your employees and their families
 - Provide access to resources
 - Reduce your HR office workload
- Opportunity to support the local community in providing access to services.
- Participation in community events as a “soft marketing” activity.



(210) 477-3275

www.alamoserviceconnection.org

A Community Partnership working together for you

For additional information
on the
Alamo Service Connection (ASC),
including
Sponsorships and Memberships,

please contact:

Martha Ramirez,

Access Assistance Coordinator, (210) 362-5217,

email: mramirez@aacog.com.